



CAPITAL INVESTIGATING

*the insured's choice - finest in the field*

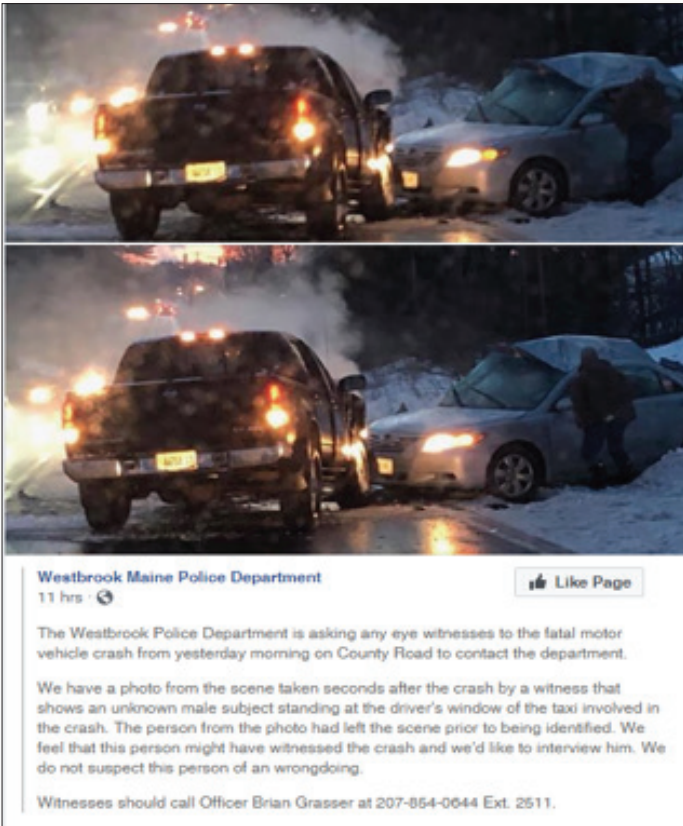
## E-Witness Canvas



Using the power of social media, Capital Investigating is able to reach thousands of potential witnesses and gain specific and delicate loss information. The E-Witness Canvas is new, innovative and Capital Investigating is currently the only insurance services company delivering this unique product.

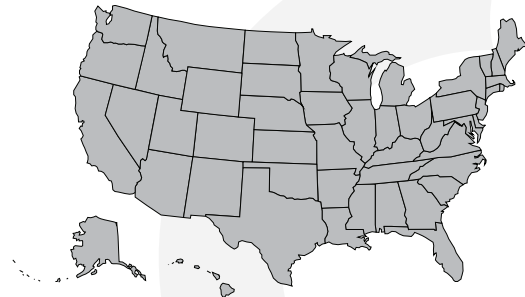
E-Witness Canvas has proven to be 8x more powerful than old fashioned door to door canvassing.

With everyone's busy schedules, you no longer have to hope that a witness hangs around and gives their name to a police officer or hope that a police officer collects enough contact information where follow-up is possible.



- Gain thousands of views from potential witnesses
- Search a specific geographic location
- Gain pre and post loss information
- Follow up research on witnesses and their relationships to the involved parties

***National Coverage for All Social Media & Desktop Investigations***



Phone 877.637.1880 | Fax 877.637.1881 | Corporate Office PO Box 4997 | Manchester, NH 03108

[www.capitalinvestigating.com](http://www.capitalinvestigating.com)

*The Insured's Choice - Finest in the Field*